



abbotFox

Wood Avens Way, Wymondham  
£1,050 PCM

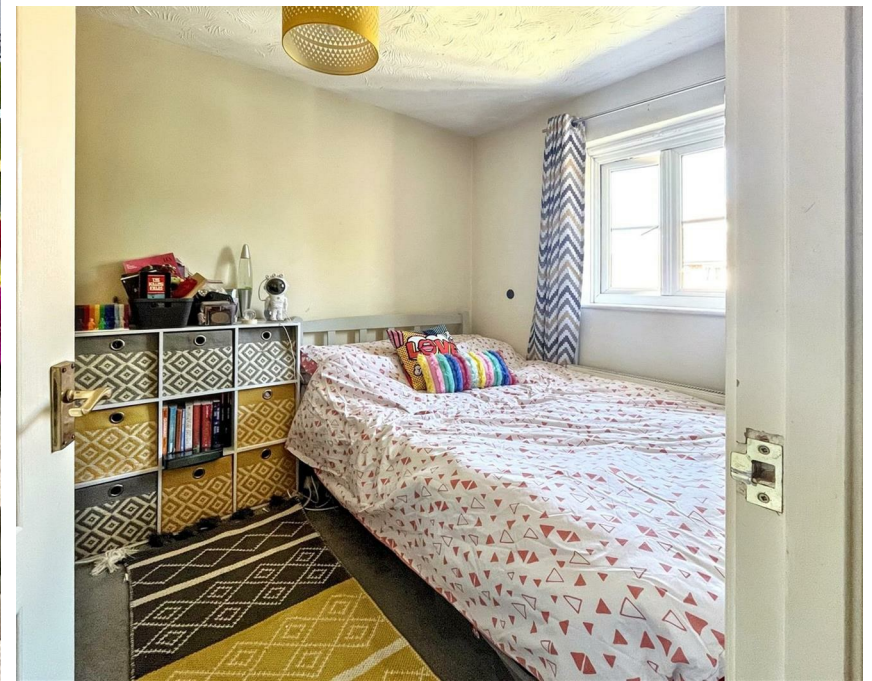
“

We are a team of genuine individuals who hold a deep passion for both property and marketing. Collectively, we bring over 70 years of experience in the property market of Norfolk and Suffolk. Our affection for both counties runs deep, and we are enthusiastic about sharing our passion with you.

Colin McKenzie | **Branch Partner**







## THE DETAIL \_\_\_\_\_

Nestled in the charming area of Wymondham, this delightful end-terrace house on Wood Avens Way offers a perfect blend of comfort and modern living. Built in 2001, the property spans an inviting 646 square feet, making it an ideal choice for small families, couples, or individuals seeking a cozy home.

Upon entering, you are welcomed into a well-proportioned reception room, which serves as a versatile space for relaxation or entertaining guests. The house features two spacious bedrooms, providing ample room for rest and privacy. With three bathrooms, including en-suite facilities, convenience is at the forefront of this property, ensuring that morning routines and guest visits are effortlessly accommodated. Further enhancing its appeal, the property benefits from a garage and two additional parking spaces, along with a generously sized gated garden—ideal for outdoor enjoyment and added security.

The location of this home is particularly appealing, as Wymondham is known for its rich history and vibrant community. Residents can enjoy easy access to local amenities, including shops, schools, and parks, all within a short distance. The area is well-connected, making commuting to nearby cities straightforward.

This end-terrace house is not just a property; it is a place where memories can be made. With its modern features and practical layout, it presents an excellent opportunity for those looking to settle in a welcoming neighborhood. Do not miss the chance to make this lovely property your own.







## THE HIGHLIGHTS \_\_\_\_\_

- 2 Bedroom
- Wymondham
- Available June
- Garage
- Good Sized Garden
- Close to sought after Wymondham Schools

*Let's talk*

01603 660000

[sales@abbotfox.co.uk](mailto:sales@abbotfox.co.uk)

[@abbotfox](#)

EPC RATING - C

Disclaimer – In accordance with the Property Misdescriptions Act, the company abbotFox gives notice that all descriptions, references to condition, necessary permissions for use and other details are given in good faith and believed to be correct, but any purchaser should not rely on them as statements of fact, and must satisfy themselves by inspection or other means, as to their accuracy.